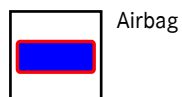


- 1 12 V On-board electrical system battery
- 2 12 V Additional battery
- 3 High-voltage battery
- 4 High-voltage charging socket

Note

The alternative high-voltage disconnect device is only to be operated when the high-voltage disconnect device in the engine compartment is inaccessible. Switch off the ignition before operating the high-voltage disconnect device and the alternative high-voltage disconnect device.



Airbag



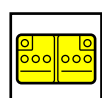
Gas generator



Seat belt tensioner



Restraint systems control unit



12 V Battery



High-voltage battery



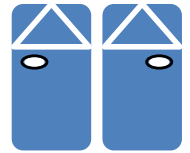
High-voltage components



High-voltage disconnect device

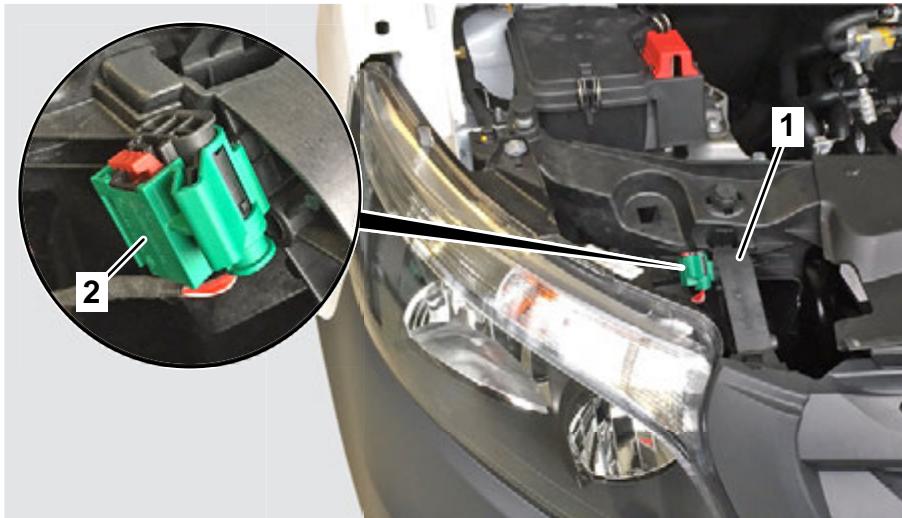


Alternative high-voltage disconnect device

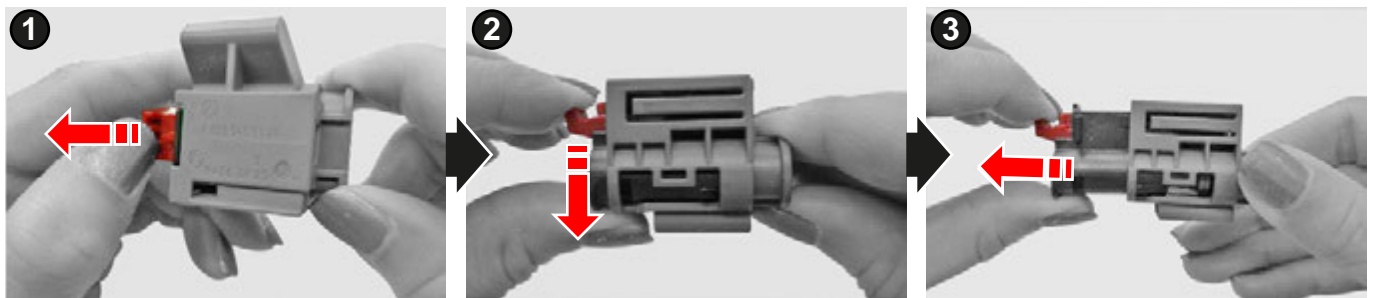


High-voltage disconnect device (Service Disconnect)

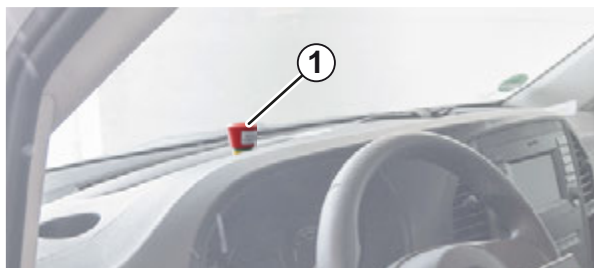
The high-voltage disconnect device is located on the module carrier at the front of the engine compartment on the right.



- 1 Module carrier
- 2 High-voltage disconnect device (Service Disconnect)



- ❶ Operate release / ❷ Push the release downwards / ❸ Pull out switch



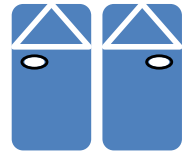
EMERGENCY OFF switch (in development vehicles)

Operating the EMERGENCY OFF switch (1) on the instrument panel triggers the immediate shutdown of the high-voltage system. The high-voltage battery is disconnected from the high-voltage on-board electrical system.



Mercedes-Benz

eVito / EQV
model 447
as of 2019

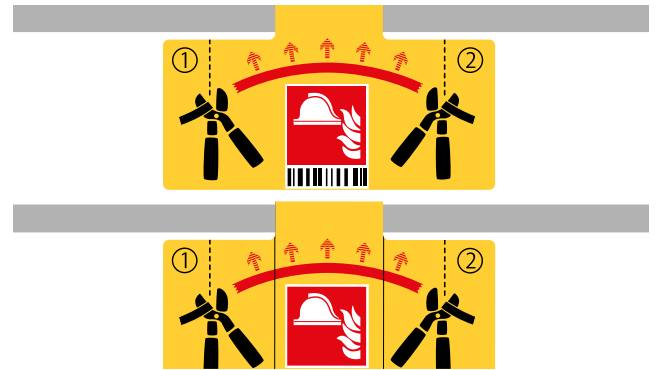


Alternative high-voltage disconnect device (rescue separating point):

The alternative high-voltage disconnect device is located in the base of the front passenger seat. It is marked with an information label.

Note

The alternative high-voltage disconnect device is only to be operated when the high-voltage disconnect device in the engine compartment is inaccessible. Switch off the ignition before operating the high-voltage disconnect device and the alternative high-voltage disconnect device.

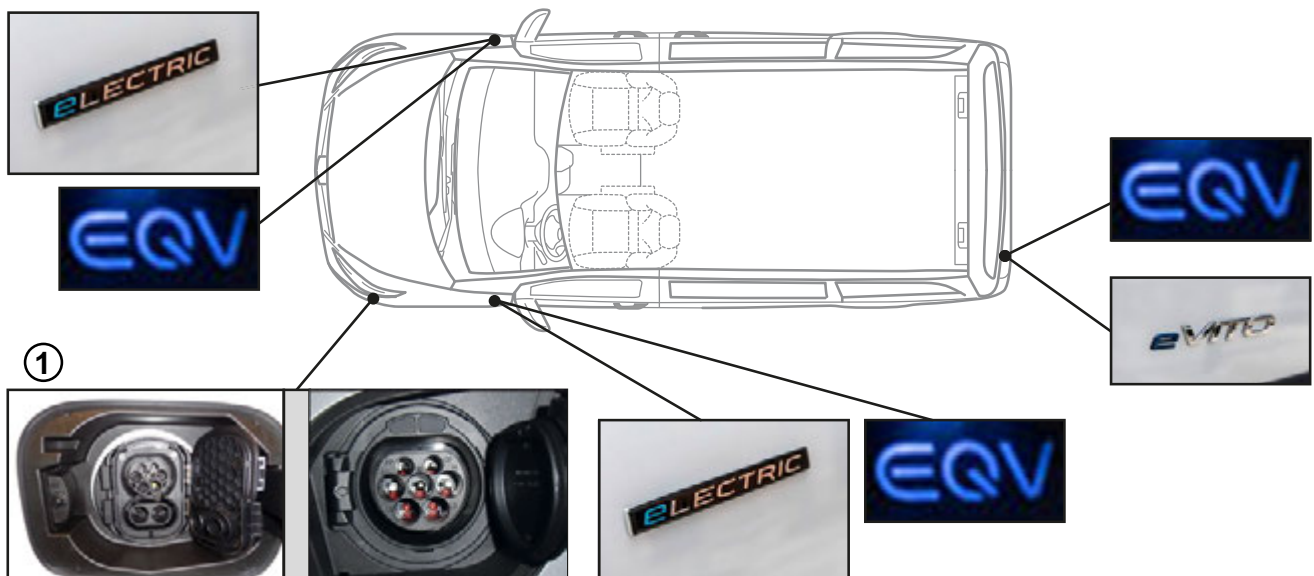


Information label on alternative high-voltage disconnect device



1. Open flap.
2. Cut electrical line at marked cutting point (the line is **not** in the high-voltage system).

Vehicle identification



- 1 High-voltage charging socket